



BATTERY HANDLING SYSTEMS

The WTC Walkie Transfer Carriage

| | |
|---------------|---------|
| Serial # | _____ |
| WO # | _____ |
| Date | _____ |
| Publication # | IOM-078 |



INSTALLATION & OPERATION MANUAL

P.O. Box 28990
St. Louis, MO 63132
1.800.BHS4.YOU
1.314.247.4968

Specifications subject
to change without
notice. ©2006, Battery
Handling Systems
Inc., St. Louis, MO



STATEMENT OF WARRANTY

Battery Handling Systems, Inc. (BHS) warrants to the original purchaser of its equipment, that the equipment will be free from defects in material and workmanship under normal and proper use, operation and maintenance for a period of 13 months from date of shipment to the original purchaser with respect to: frames, weldments, electric drives, motors (except brushes), motor driven pumps, valves, and drive wheel assemblies (except wheels).

The above warranty will remain in effect with respect to all other parts for a period of ninety (90) days after shipment. Bulbs, fuses and filters are not warranted unless found to be defective prior to use.

BHS will provide parts and labor to repair or replace (at its option) any part which is determined to be defective within the above mentioned warranty period providing the proper procedures for warranty claims are followed.

BHS will also cover normal ground freight charges such as ground UPS, common carrier, etc. Any requests for next day delivery or second day service will be the responsibility of the user.

Notice of any claimed defect must be reported immediately to **BHS** or an authorized dealer *prior* to repair in accordance with the **BHS** warranty procedures, available upon request.

Warranty will not cover incidents of abuse, misuse, accidents, overloading, or misapplication of products as set forth in the instruction manual and product application bulletins.

This warranty does not cover accessories and attachments not manufactured by **BHS**. The original manufacturers warranty (typically 90 days) takes precedence and all claims shall be directed to their respective manufacturers.

At no time shall **BHS** assume liability in excess of the purchase price of said equipment for which a claim is made.

THE WARRANTY SET FORTH HEREIN IS THE COMPLETE AND ENTIRE WARRANTY MADE BY BHS, AND THERE ARE NO OTHER WARRANTIES, EXPRESS OR IMPLIED, WHETHER OF MERCHANTABILITY, FITNESS FOR PARTICULAR PURPOSE, OR OTHERWISE, MADE BY BHS. NO PERSON IS AUTHORIZED TO MAKE ANY OTHER OR ADDITIONAL WARRANTY ON BEHALF OF BHS. THE RIGHT TO REPAIR OR REPLACEMENT, AS SET FORTH HEREIN, IS THE SOLE AND EXCLUSIVE REMEDY FOR BREACH OF THE ABOVE WARRANTY, AND BHS SHALL NOT BE LIABLE FOR ANY DAMAGES, WHETHER DIRECT, INCIDENTAL, CONSEQUENTIAL OR OTHERWISE, OCCASIONED BY ANY BREACH OF THIS WARRANTY, OR FOR ANY CHARGES OR EXPENSES OF ANY NATURE INCURRED WITHOUT BHS' CONSENT, EVEN THOUGH BHS HAS BEEN NEGLIGENT.



SAFETY

1. Read this entire manual before operating the unit.
2. Do not operate or perform any maintenance on the unit until you have been fully trained.
3. Before performing any maintenance or service to the equipment, make certain that there is no battery on the roller bed.
4. Verify equipment is disconnected from power source before attempting to service or install the unit. Lock out the power source and tag it to prevent unexpected energization of the unit.
5. Never energize or operate this unit with any guard or cover removed unless required to do maintenance or repair. Keep hands out of machine when it is in operation.
6. *Always* observe warning labels on the equipment.
7. *Always* wear personal protective equipment appropriate to the task being performed.



INSTALLATION

WALKIE TRANSFER CARRIAGE INSTALLATION INSTRUCTIONS

The WTC can be mounted by either welding or bolting it to the host pallet jack. Bolt-on kits are available from the factory if welding is not an option. The unit should be shimmed in the front to allow for 1/4" – 1/2" of rearward pitch.

If the unit is equipped with fork pockets, simply lower the pallet jack to the fully lowered position and slowly drive the pallet jack into the pockets. Slowly lift the pallet jack forks and the unit is ready for use.

OPERATION

BASIC OPERATING INSTRUCTIONS FOR THE WALKIE TRANSFER CARRIAGE

The following illustrates the basic steps necessary to operate and change batteries with the pallet jack mounted Walkie Transfer Carriage model (WTC). Operators must be equipped with all necessary personal safety equipment and be properly trained in the handling of electric forklift batteries. Operators must also be properly trained in the use of the battery handling equipment.

1. Once the WTC has been properly mounted to the pallet jack (this will depend on the mounting configuration ordered), position the lift truck in the appropriate staging area
2. Disconnect the battery leads and remove any battery restraints.
3. Move the WTC into a position such that the battery compartment of the forklift is aligned with the roller compartment of the WTC.
4. Verify that the safety stop at the end of the WTC roller bed is in the down position. (FIGURE 1)
5. Adjust the vertical height of the WTC unit to match the battery compartment of the lift truck or slightly higher (**do not exceed a 1/4" difference**).
6. Slowly turn the hand wheel counter-clockwise in order to extend the extractor arm toward the battery. (FIGURE 2)
7. Once the arm has been extended, attach the hook and chain to the battery making sure that the hook is through the eyelet of the battery. (FIGURE 3)



FIGURE 1



FIGURE 2



FIGURE 3

OPERATION

8. Remove the battery from the lift truck by slowly turning the hand wheel clockwise to bring the extractor arm back into the roller compartment of the WTC. Verify vertical alignment is correct.
9. Once the battery is entirely inside the WTC roller frame, move the battery safety stop to the upright position to secure the battery for transport. (FIGURE 4)
10. The WTC can now be transported to the charging area via the pallet jack.
11. Position the WTC with an open roller compartment in the battery changing area. Be sure to verify the vertical alignment.
12. Lower the safety stop on the front of the WTC.
13. Begin to turn the hand wheel clockwise to extend the extractor arm outward and slowly move the battery from the WTC to the battery stand while lifting arm safety latch. (FIGURE 5)
14. After transfer, engage battery stop on stand (if so equipped) then disconnect hook and chain assembly from the battery.
15. Locate and remove a fully charged battery to be installed into the lift truck by following the above steps.

As with all material handling equipment, this transfer carriage must be inspected prior to use for any visual damage. A regularly scheduled inspection by trained maintenance personnel should also be performed to verify and maintain the proper operation and load capacity of the carriage.

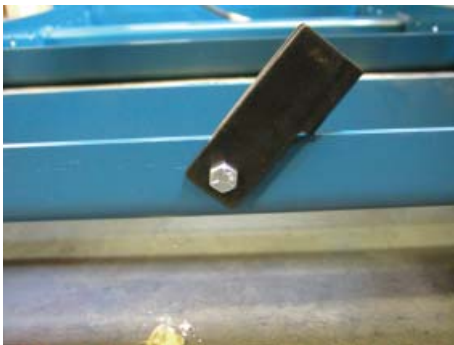


FIGURE 4



FIGURE 5

Warranty Procedures

All products manufactured by **Battery Handling Systems** carry a 13 month warranty against defective material and workmanship. It is the intention of **Battery Handling Systems** warranty policy to fully protect original users and servicing dealers who submit valid warranty claims, as well as to identify and eliminate claims where product failure is the result of customer abuse, neglect or misapplication. It is also the warranty policies purpose to clarify the communications required to file valid claim and to eliminate duplicate or unnecessary effort and expenditures.

Whenever the issue of a possible warranty claim is raised, the following information should be determined immediately.

1. Identify the product in question by obtaining the model, serial number, and hour meter reading (if applicable).
2. Customer name, location, contact and phone number.
3. Installation date, who installed?
4. Any prior repairs, modifications or adjustments.

Authorization

Once information is completed and appears to be a valid warranty claim, authorization should be obtained from **BHS** to proceed. (1-800-247-9500) Fax: (314) 423-6444

*Such authorization does not ensure that a warranty situation exists since further analysis may reveal abuse previously undetected.

Note: BHS will allow a maximum of (2) hours to identify problem and repair. This *includes travel*, without prior authorization.

Return Of Defective Parts

In any warranty repair where parts are being replaced **Battery Handling Systems** will request defective parts to be returned and marked with RGA (Returned Good Authorization) number for further evaluation.

Claim Procedures

The following procedures should be observed when submitting warranty claims. Neglecting to do so could result in unnecessary communication and delay in processing the claim.

1. All claims must be submitted on a **Battery Handling Systems Warranty Claim Form** and must be completely filled out. Fax: (314) 423-6444
2. Labor allowance hours are determined by our engineering staff.
3. Actual travel time, labor time, and parts costs must be indicated as separate items as provided on the form
4. All warranty claims and supporting documents should be directed to:

Battery Handling Systems
P.O. Box 28990
St. Louis, MO 63132

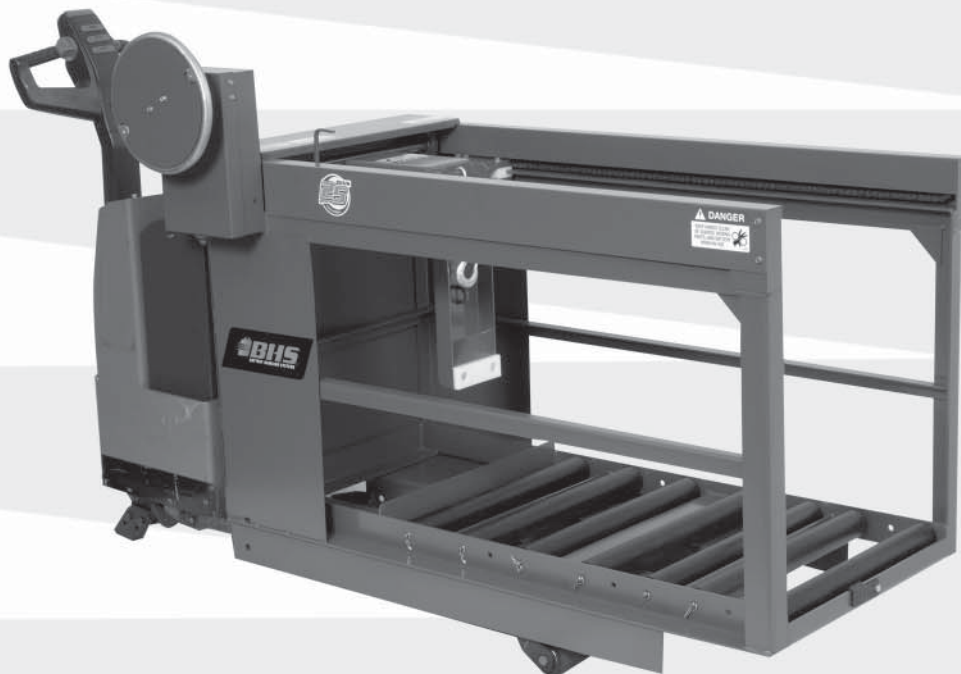


Specifications are subject to change without notice. Copyright ©2000, Battery Handling Systems Inc. St. Louis, MO SF-9028 08/00 15M



BATTERY HANDLING SYSTEMS

**The Technical Support Help Line is open from 7:30 a.m. - 5:00 p.m. CST
Parts orders should be faxed to 314.423.5948**



1.877.BHS.4YOU

P.O. Box 28990
St. Louis, MO 63132 USA
1.800.BHS.9500
Fax: 314.423.6444
E-mail: sales@bhs1.com
Web: www.bhs1.com